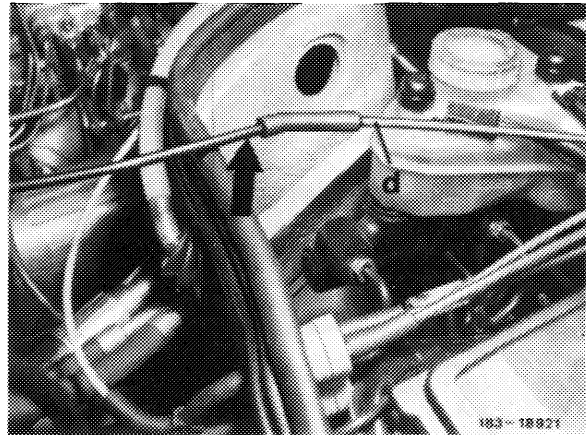


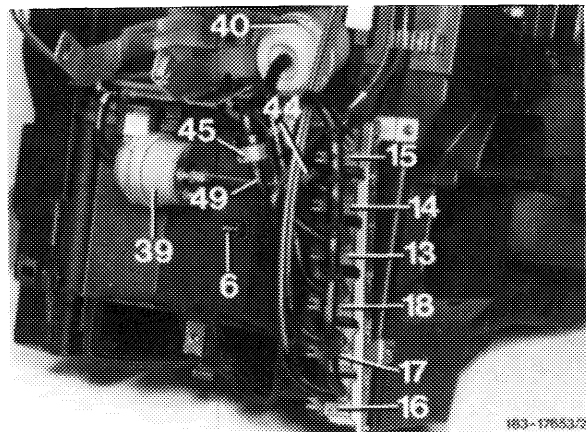
A. Testing vacuum circuit I

- 1 Ignition switched off.
- 2 Pull vacuum line red-green from check valve (36).
- 3 Connect vacuum line of tester (refer to arrow) evacuate and read pressure gauge.
- 4 If gauge shows a pressure increase, test the individual switchover valves (83-628).



B. Testing vacuum circuit II, with vacuum element (38) for defroster nozzle flaps stage 1

- 1 Remove glove box (68-140).
- 2 Remove righthand cover under instrument panel (68-150).
- 3 Remove righthand lateral lining of center console (68-200).
- 4 Pull vacuum line red-white from switchover valve (15) and connect tester.
- 5 Evacuate vacuum circuit II, while paying attention to operation of defroster nozzle flaps. If gauge shows pressure increase, replace vacuum element (38) or vacuum line.



### C. Testing vacuum circuit III, with vacuum element (38) for defroster nozzle flaps 2nd stage

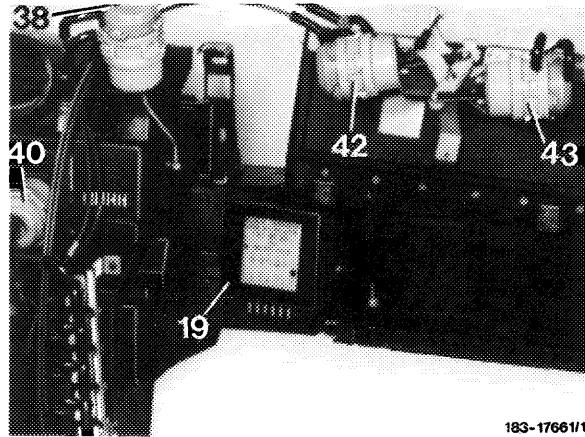
1 Pull vacuum line red/light blue from distributor (49) and connect tester.

2 Evacuate vacuum circuit III. If pressure on pressure gauge increases, replace vacuum element (38) or vacuum line.

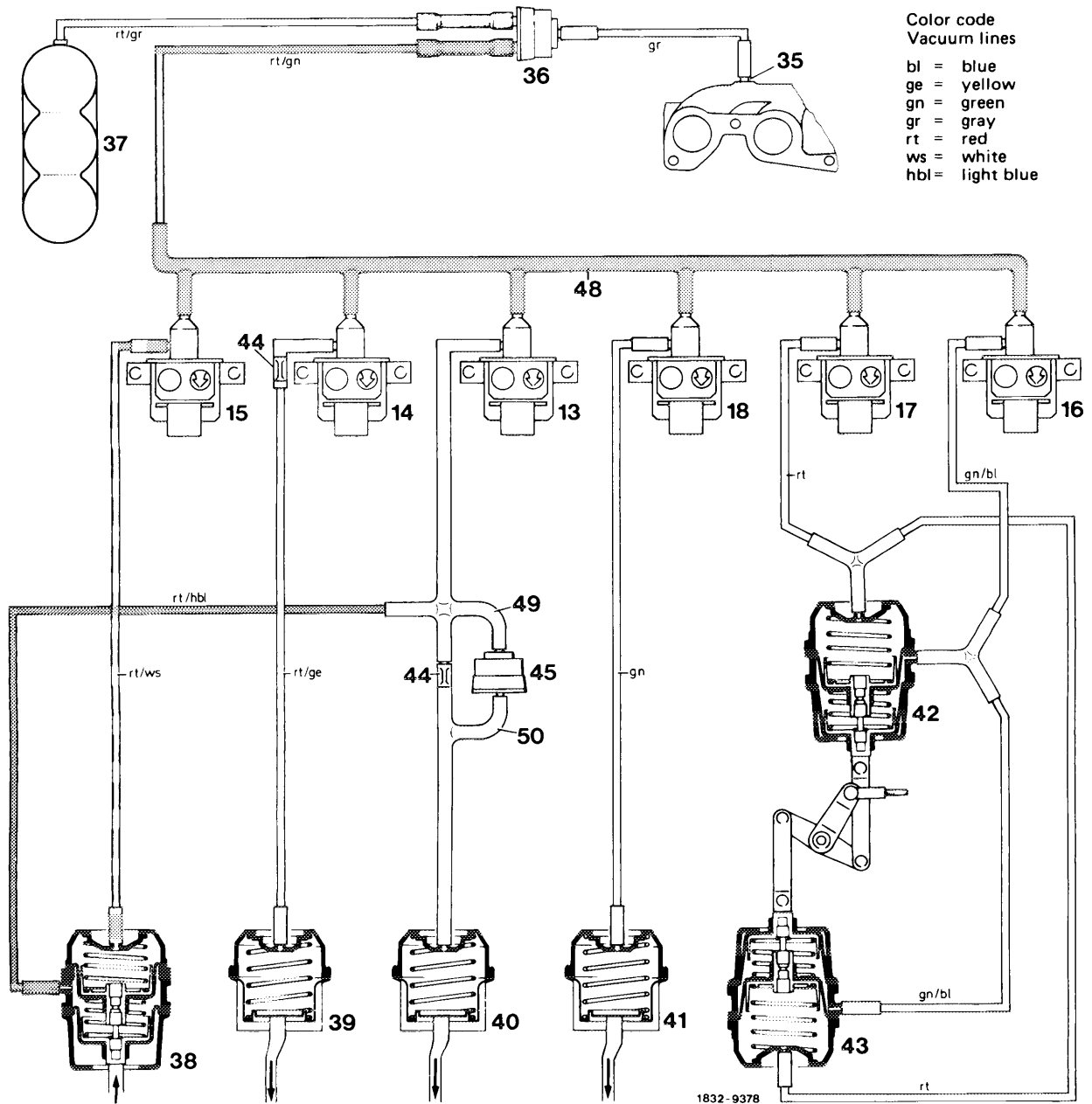
3 Install righthand cover under instrument panel (68-150).

4 Install glove box (68-140).

5 Install righthand lateral lining of center console (68-200).




183-17661/1



Color code  
Vacuum lines

- bl = blue
- ge = yellow
- gn = green
- gr = gray
- rt = red
- ws = white
- hbl = light blue


 Vacuum circuit I  
 Vacuum circuit II  
 Vacuum circuit III

1832-9378