

## Vacuum pump

si 0025/A **GB**

### Notes for the installation of a new vacuum pump Wear on the stroke curve

MSI-PG 11.02

Vehicle:	MB Diesel passenger cars from construction year 1968 on →	Product:	Vacuum pump Pierburg ref. no. 7.20208... 7.20547... 7.20607...	O.E. ref. no. various*
----------	---	----------	--	---------------------------

#### Installation notes

**Attention!**  
Vacuum pumps are safety parts. Therefore installation and removal may only be carried out by authorized specialist workshops.

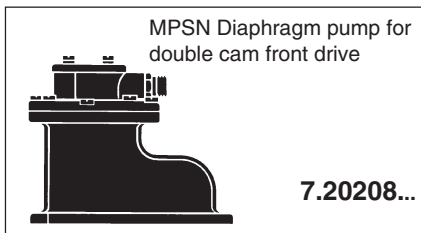


Fig. 1

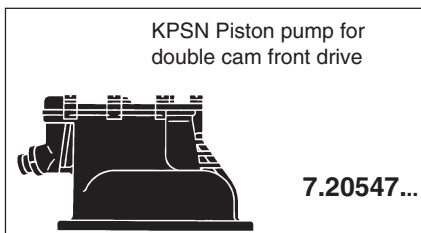


Fig. 2

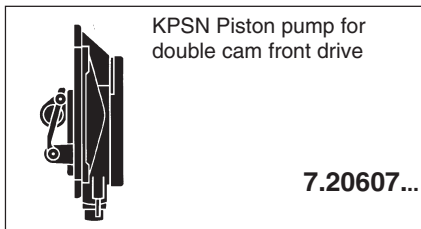


Fig. 3

#### For Vacuum pumps:

- 7.20208..., fig. 1
- 7.20547..., fig. 2
- 7.20607..., fig. 3

- Install vacuum pump only if the stroke curve is in a perfect condition; see chapter "wear on the stroke curve".
- Install only when the cams are in their lower position, and screw on crosswise
- Always use the new enclosed gasket.

#### For 7.20607..., fig. 3

- Before installing this vacuum pump the assembly basket (3, fig. 4) of older vehicles should be removed. It is screwed on in the crankcase in front of the injection adjusting device. New vehicles don't have this assembly basket any more.

**Attention.** The assembly basket must not be installed again after removal.

It may only be installed as an aid during removal of the injection pump. This ensures that the injection adjusting device will not get stuck when the engine turns.

#### For 7.20547..., fig. 2

#### For 7.20607..., fig. 3

- After installation of the vacuum pump leave the vacuum line open for the time being.
- Install belt, fan, and fan hood.
- With the engine running fill in approximately 50 cm<sup>3</sup> of clean engine oil into the vacuum pump using the open vacuum connection, and connect vacuum line immediately.

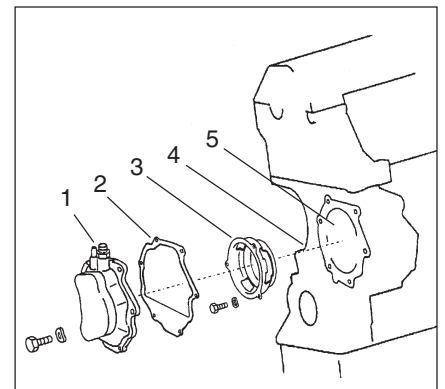


Fig. 4

- 1 vacuum pump
- 2 gasket
- 3 assembly basket
- 4 crankcase
- 5 injection adjusting device inside the crankcase

\* For part matching and spare part references refer to the catalogs in effect.

Subject to change of illustrations and text!