

## 42-0520 Removal and installation of front brake control cable

---

Preceding work:

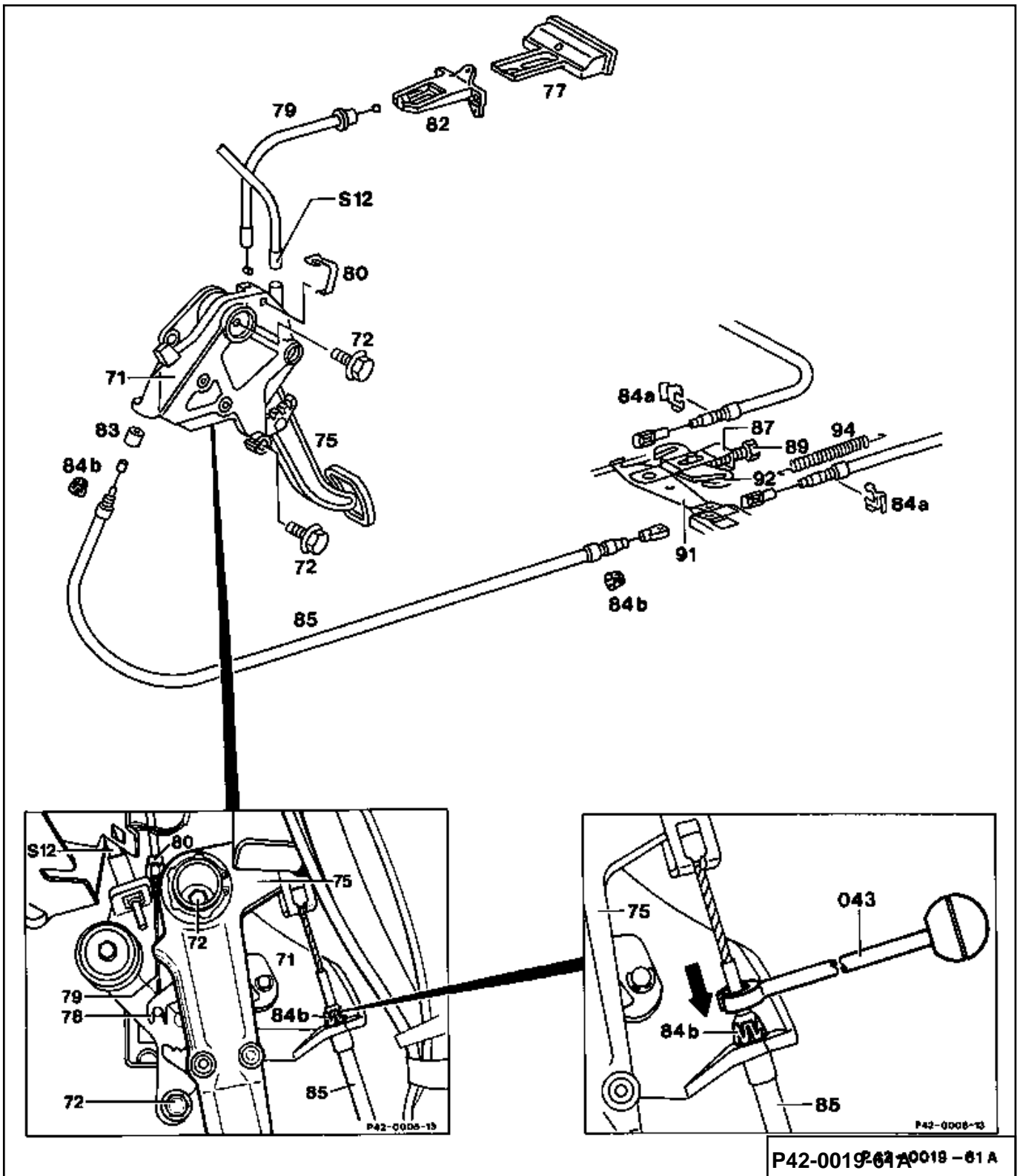
Remove accelerator pedal (30-0315).

Remove cover below instrument panel (68-0150)

Operation no. of operation texts and work units or standard  
texts and flat rates

42-5931

### A. Model 124

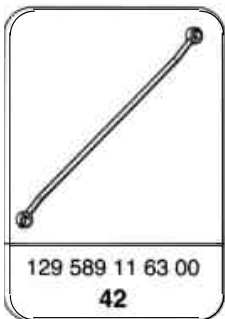


P42-0019-61A P42-0019-81A

- |                                      |  |
|--------------------------------------|--|
| Heat shield for exhaust system ..... | remove, install.   |
| Return spring (94).....              | remove, install.   |
| Adjustment screw (89) .....          | screw back on adjustment bracket (87) and unscrew self-locking hexagon bolt on intermediate lever (91). Use new self-locking hexagon bolt when installing. |

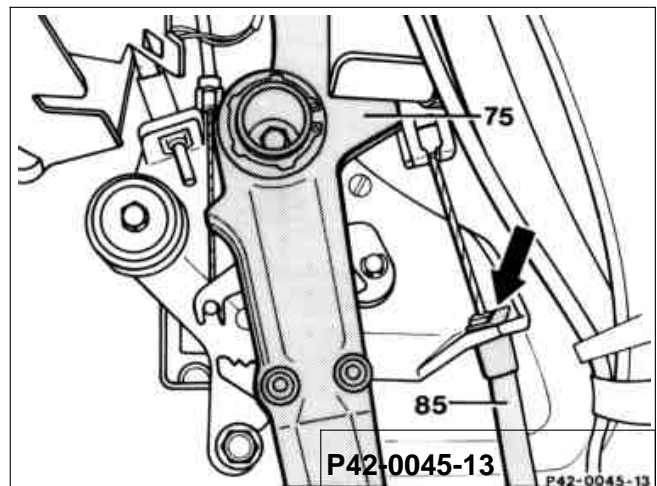
Ferrule (84b) on frame floor holder .....	press together with clip remover (043) 129 589 11 63 00 and pull out brake control cable (85). The brake control cable (85) can also be removed by breaking the ferrule (84b). Install new ferrule (84b) in slot in brake control cable (85). Observe Note on spring clip.
Door entrance strip.....	remove, install.
Trim on A-pillar.....	remove, install.
Carpeting.....	fold back to expose brake control cable (85).
Foot support.....	remove, install.
Mounting clips in footwell.....	loosen, tighten.
Brake cable (85).....	unhook from pull lug on pedal (75), hook in.
Ferrule (84b) on pedal assembly (71).....	press together with clip remover (043) 129 589 11 63 00, remove brake control cable (85) and pull down forward. When installing, ensure that ferrules (84b) are properly seated.
Parking brake.....	adjust after installing brake control cable (85) (42-0540).

**Special tool**



**Note on spring clip**

Model 124 with manufacturing date prior to June 1988 is still equipped with a brake cable (85) secured to the pedal (75) with spring clips (arrow) instead of ferrules. The clip remover 129 589 11 63 00 cannot be used on this version. The spring clip can be removed and installed with a suitable screwdriver.

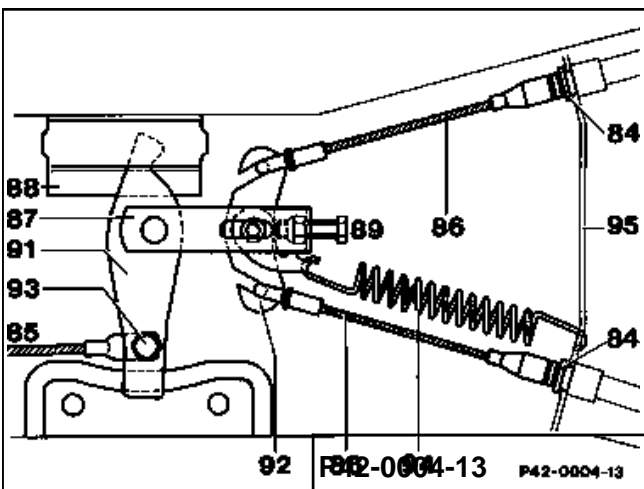
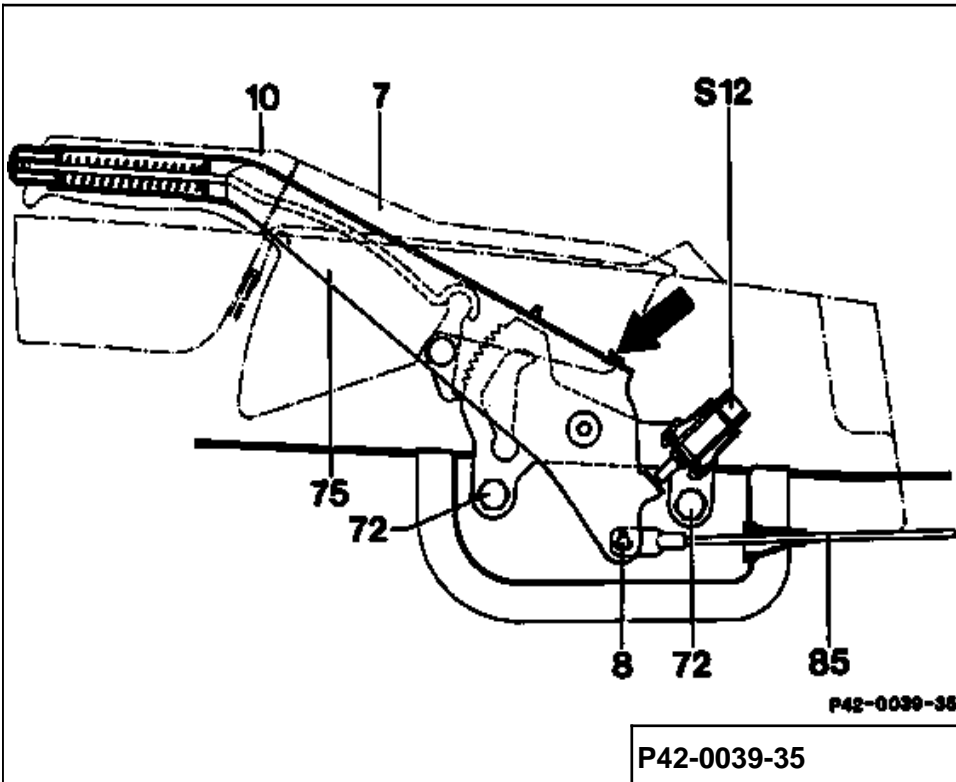


75 Pedal

**B. Model 201**

Preceding work:  
 Remove center console (68-0200).  
 Remove, install exhaust heat shield.

Operation no. of operation texts and work units or standard texts and flat rates  
 42-5931



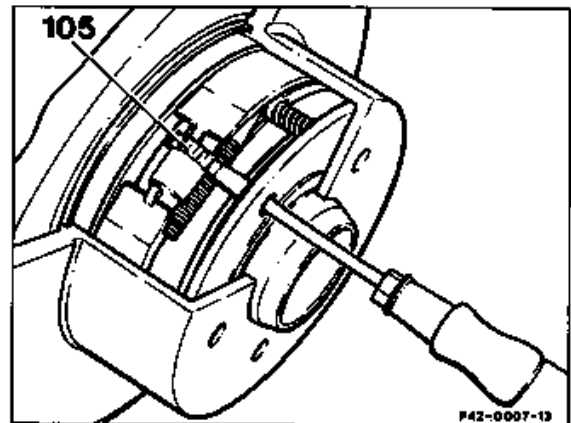
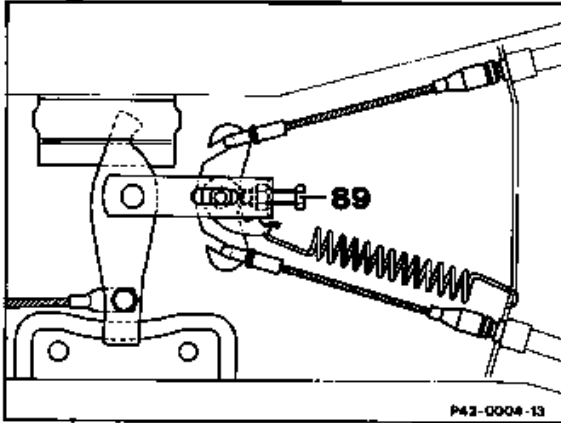
Return spring (94)..... unhook on cable swivel (92), hook in.  
 Bolts (93) ..... screw out, screw in and replace, remove brake control cable (85).



Collar pin (8)..... remove and remove brake cable (85) together  
with grommet (16). When installing assure that  
collar pin (8) is secure carefully with cotter pin.  
Parking brake..... adjust after repair (42-0540).

## 42-0540 Adjusting parking brake

Preceding work:  
Remove light-alloy rims.

Operation no. of operation texts and work units or standard texts and flat rates:  
42-1301, 42-1302



Vehicle.....	raise at rear.
Adjustment screw (89).....	loosen completely. The spreader locks must not be preloaded.
Rear wheel.....	unscrew one lug bolt on right and left and turn wheel so that bolt hole points approx. 45° upward toward rear.
	 Light alloy rims must be removed.
Adjust.....	through bolt hole with screwdriver (size 4.5 mm) by engaging in adjusting wheel on adjustment device (105) and turning until rear wheel can no longer be turned. Then turn adjustment wheel back (5-6 teeth) until the wheel can be turned freely.
	 Turn as follows to apply brake shoes: On left side from bottom toward top, on right side from top toward bottom. <b>When releasing the adjusters ensure that both sides are turned back by exactly 5-6 notches.</b>
Adjustment screw (89).....	screw in until brake control cables no longer sag.
Parking brake.....	actuate a number of times with a force of approx. 400 N.

Adjustment screw (89) ..... screw in on adjustment bracket until:

- a) The parking brake pedal can be moved **one** notch with a mean force of approx. 150 - 180 N.
- b) The parking brake lever can be moved **one** notch with a mean force of approx. 90 - 120 N.

Parking brake..... release and ensure that rear wheels are free.

Vehicle..... lower at rear.

Lug bolts..... tighten to specified torque (110 Nm).

### Adjustment data

Model	124 up to 09/89	124 as of 10/89	201 up to 01/87	201 as of 02/87
Number of notches by which the parking brake must be adjusted if no adequate braking effect has yet been obtained	4	5	2	3