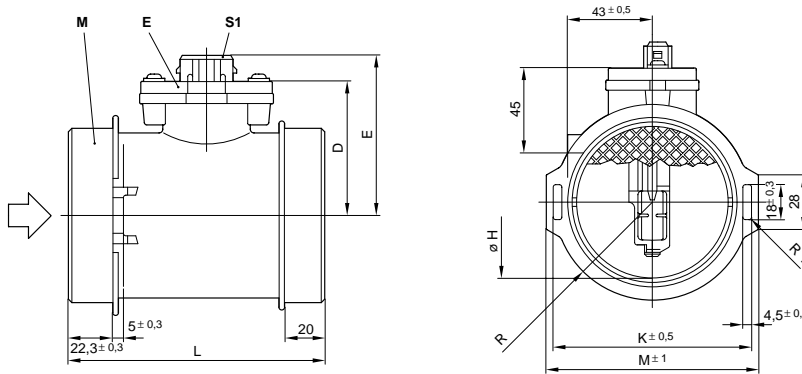
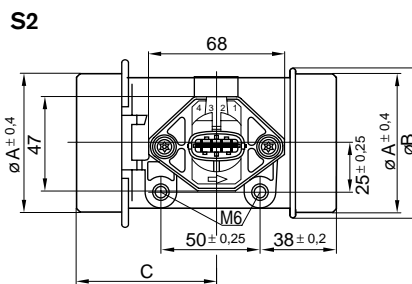
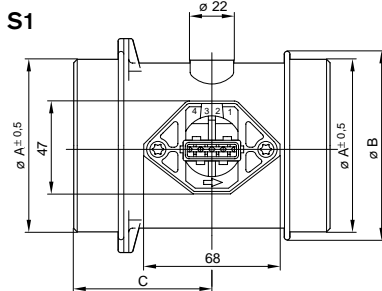


**Dimension drawings.**

E Plug-in sensor, M Measurement venturi, S1/S2 Plug connection

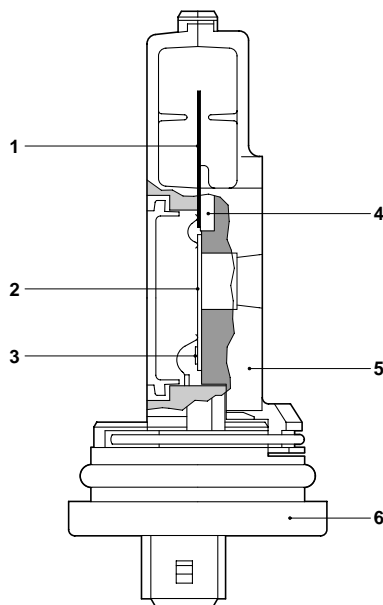


Ø A	Ø B	C	D	E	H	K	L	M	R	Measure- ment venturi	Plug-in connection	Part number
66	70	73	86	33	75	130	82	37	KS	S1	<b>0 280 217 102</b>	
70	76	50	69	82	34.8	–	96	–	42	KS	S1	<b>0 280 217 107</b>
70	76	70	69	82	33.5	85	130	92	42	KS	S2	<b>0 280 217 120</b>
80	86	70	73	86	39	–	130	–	–	KS	S2	<b>0 280 217 519</b>
95.6	102	70	76.2	91.2	45	110	130	117	54	Alu	S1	<b>0 280 217 801</b>



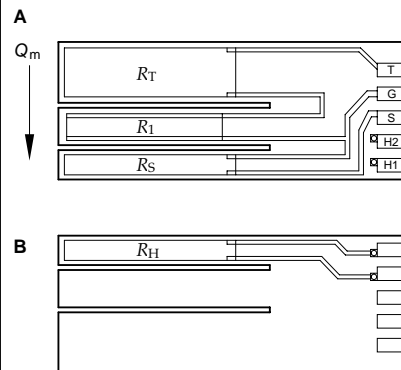
**Plug-in sensor.**

1 Sensor, 2 Hybrid, 3 Power module, 4 Mounting plate, 5 Heat sink, 6 Plug housing



**Sensor element with thick-film resistors.**

$Q_M$  Mass rate of flow,  $R_1$  Trimmer resistor,  $R_H$  Heater resistor,  $R_S$  Sensor resistor,  $R_T$  Air-temperature measuring resistor, A Front, B Rear



**Installation instructions**

Water and other liquids must not collect in the measurement venturi. The measurement venturi must therefore be inclined by at least 5° relative to the horizontal. Since care must be taken that the intake air is free of dust, it is imperative that an air filter is fitted.

**Explanation of symbols:**

- $R_1$  Trimmer resistor
- $R_2, R_3$  Auxiliary resistors
- $R_5, C_4$  RC element
- $R_H$  Heater resistor
- $R_S$  Platinum metal-film resistor
- $R_T$  Resistance of the air-temperature-sensor resistor
- $U_K$  Bridge supply voltage
- $U_A$  Output voltage
- $U_V$  Supply voltage

**Connector-pin assignment**

- Pin 1 Ground
- Pin 2  $U_A(-)$
- Pin 3  $U_V$
- Pin 4  $U_A(+)$

**Accessories**

**For 0 280 217 102, .. 107, .. 801**

Plug housing	<b>1 284 485 118</b>
Receptacle	<b>1 284 477 121 1)</b>
Protective cap	<b>1 280 703 023 1)</b>

Each 4-pole plug requires 1 plug housing, 4 receptacles, and 1 protective cap.

1) Quantity 5 per package

**For 0 280 217 120, .. 519**

Designation	For conductor cross-section	Part number
-------------	-----------------------------	-------------

Plug housing	–	<b>1 928 403 112</b>
Contact pin	0.5...1.0 mm <sup>2</sup>	<b>1 987 280 103</b>
Individual gasket	1.5...2.5 mm <sup>2</sup>	<b>1 987 280 105</b>
Individual gasket	0.5...1.0 mm <sup>2</sup>	<b>1 987 280 106</b>
Individual gasket	1.5...2.5 mm <sup>2</sup>	<b>1 987 280 107</b>

Each 4-pole plug requires 1 plug housing, 4 contact pins, and 4 individual gaskets.

**Note**

For automotive applications, original AMP crimping tools must be used.