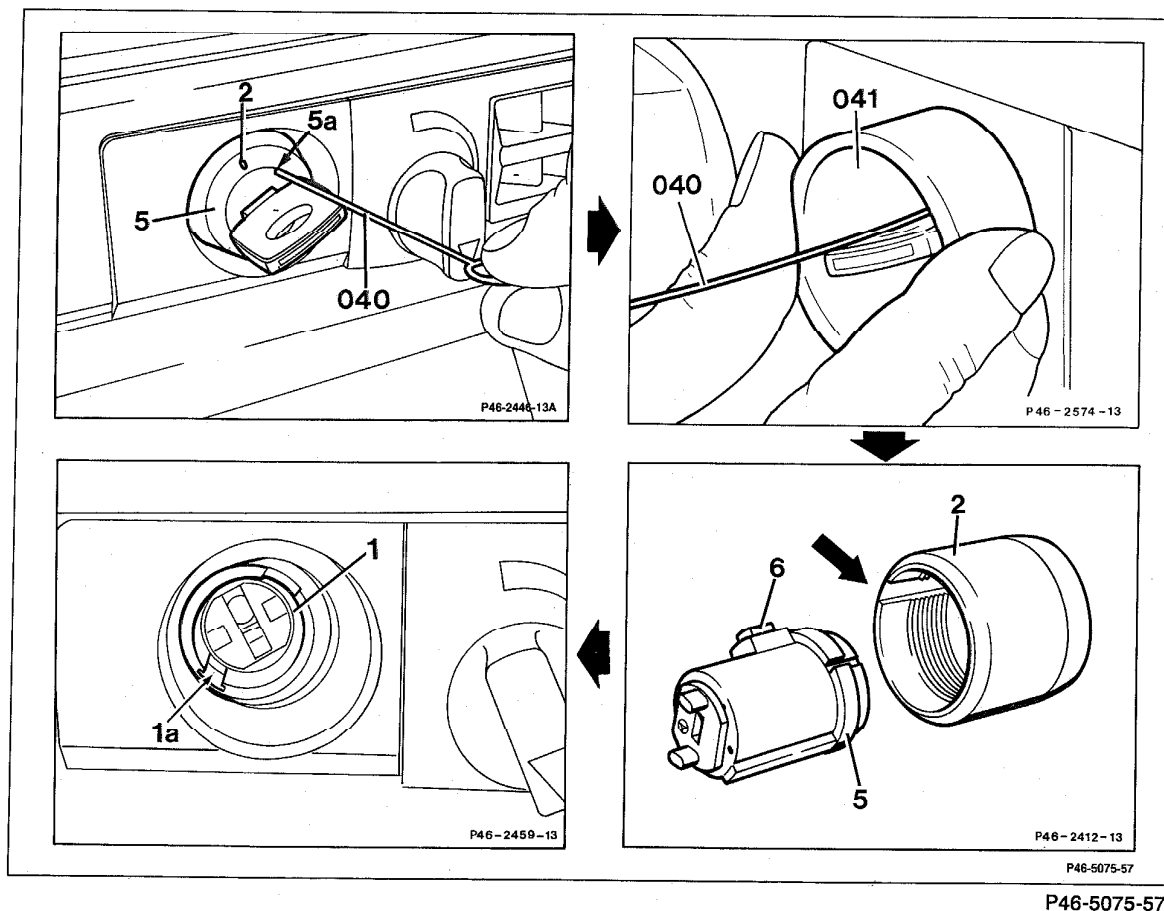


**B. Removal and installation of lock cylinder (up to 08/89)**



Lock cylinder (5) .....

Cover (2) .....

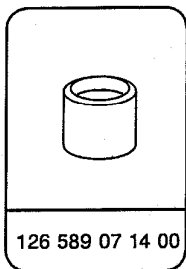
turn to position "1". Press release wire (040) into hole (5a) to stop until retaining catch is released.

screw off with sleeve (041) 126 589 07 14 00, screw on, remove from steering wheel lock together with lock cylinder (5). Pull release wire (040) out of lock cylinder (5) and turn ignition key to position "0", remove. When installing position steering wheel lock (1) so that high spot on lock cylinder (5) engages in groove (1a) in steering wheel lock (1).

## 46-640 R and R steering wheel lock

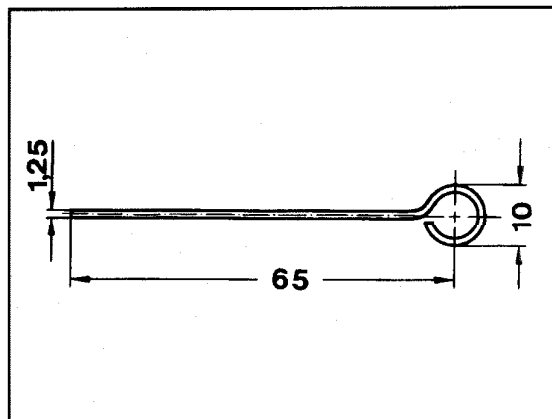
- Lock cylinder (5) ..... remove, when installing insert into cover (2) so that safety catch (6) engages in groove in cover (2). Insert ignition key and turn to position "1", push release wire (040) into hole (5a) and release retaining catch.
- Lock cylinder (5) ..... check for proper function.

### Special tool



### Shop-made tool

Release wire



P46-0074-13