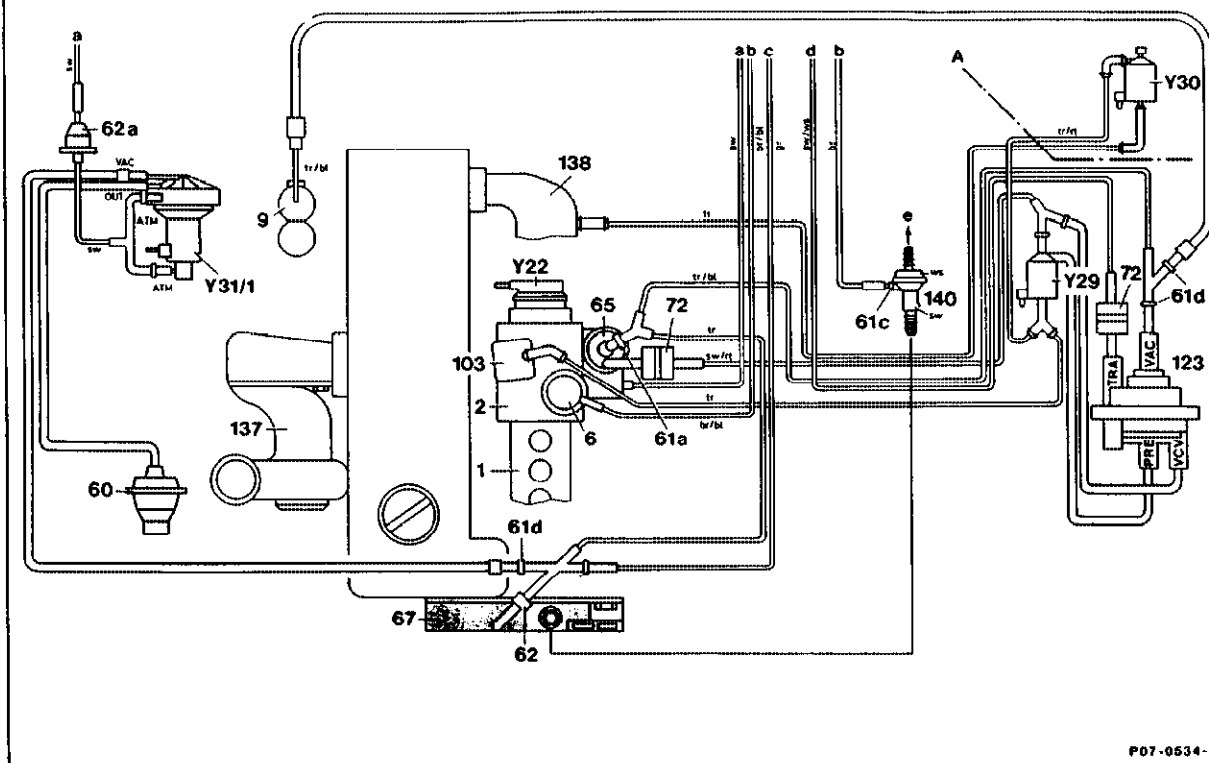


My car has only 1 connection - vacuum supply - at 65.
Is this a problem, or perhaps a mod?



P07-0534-S7

Vacuum Line Routing Electronic Diesel System Engine 602.96 Model 124

1	Injection pump	Y22	ELR actuator
2	Governor	Y29	Vacuum amplifier switchover valve, automatic transmission
6	Stop unit	Y30	Switchover valve, engine overload protection
9	Vacuum reservoir	Y31/1	Pressure transducer, exhaust gas recirculation valve
60	Exhaust gas recirculation valve	A	Partition wall
61a	Restriction	a	Ventilation to passenger compartment
61b	Restriction	b	Key shut-off
61c	Restriction Ø 0.5 mm (orange)	c	Other ancillaries
61d	Connecting piece (without restriction)	d	Vacuum unit, automatic transmission
62	Filter	e	Brake booster
62a	Filter		
65	Vacuum control valve		
67	Vacuum pump		
72	Damper		
103	ALDA unit		
123	Vacuum amplifier		
137	Exhaust gas turbocharger		
138	Charge air distribution pipe		
140	Non-return valve - brake booster		
			Pressure and vacuum connections to vacuum transducer or vacuum amplifier
		TRA	To vacuum unit, automatic transmission
		VAV	Vacuum from vacuum pump
		VCV	To vacuum control valve
		ATM	Ventilation to passenger compartment
		OUT	Exhaust gas recirculation to exhaust gas recirculation valve or recirculating air valve