

AUTO TRANS DIAGNOSIS - 722 SERIES

Article Text (p. 21)

1996 Mercedes-Benz C220

Copyright © 1998 Mitchell Repair Information Company, LLC
Wednesday, January 26, 2000 12:03PM

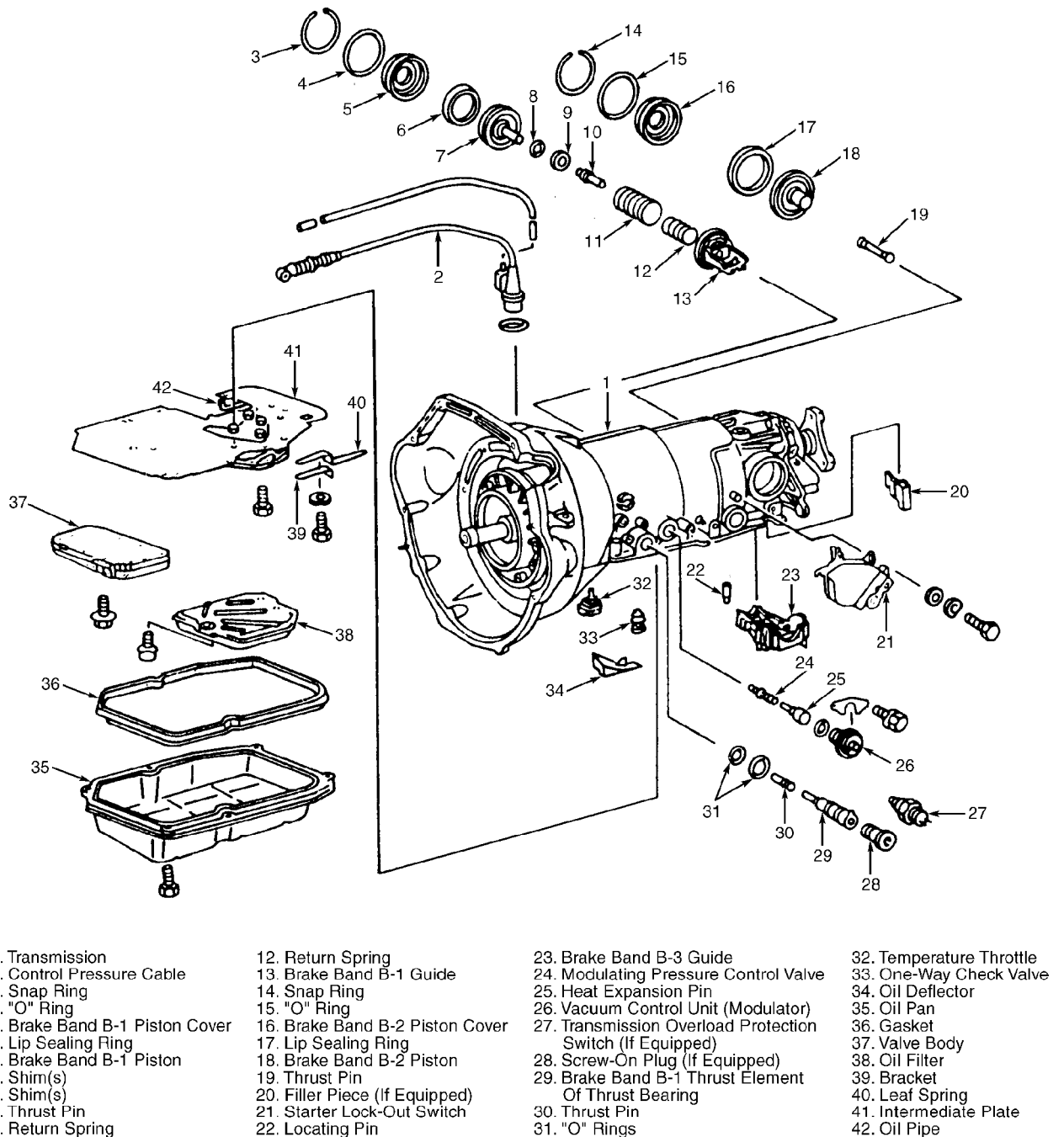


Fig. 6: Exploded View Of Transmission Case External Components (722.3 & 722.4 Series)

Courtesy of Mercedes-Benz of North America.

5) Remove transmission overload protection switch or screw-on plug for brake band B-1 thrust element and thrust pin. Remove gear selector lever and starter lock-out switch. Remove vacuum control unit (modulator) and retaining plate. Remove modulating pressure control valve and heat expansion pin.

6) Remove kickdown solenoid. Remove output shaft nut. Remove