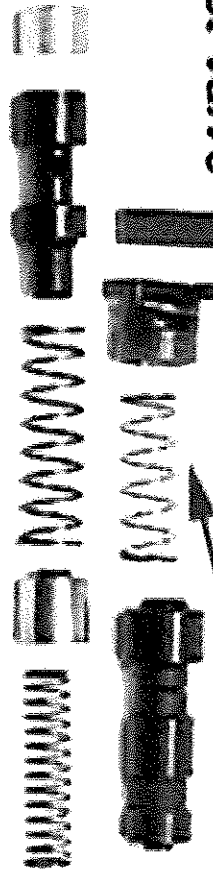


Governor Pressure Boost Valve

Note # 1
 If the spring is located in FRONT of the gov. press. valve the car will start off in 2nd Gear!

3-2 Control Valve



TV Limit Valve



Pressure Regulator Valve

Pressure Control Valve

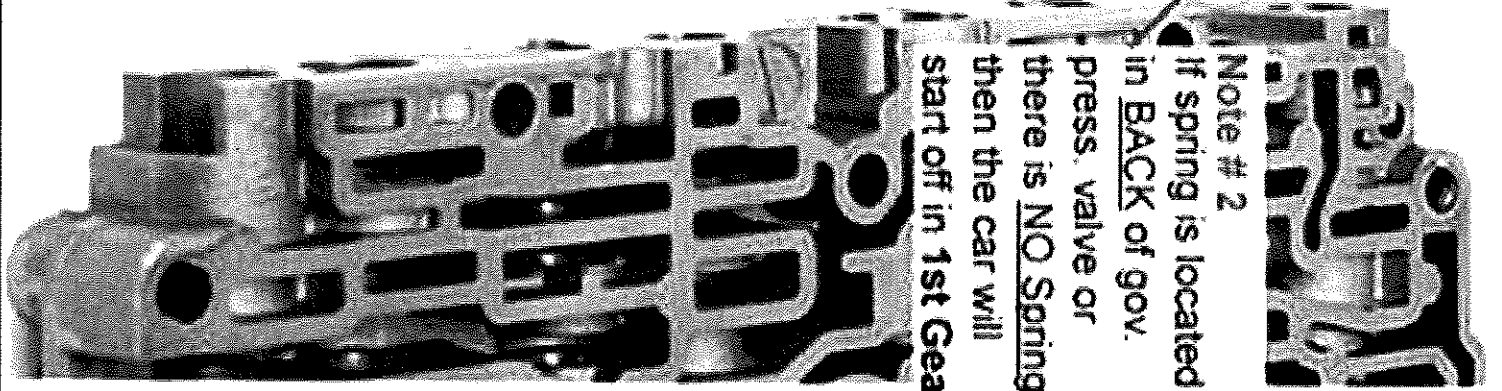
2-3 Sequence Valve

2-3 Shift TV Valve

2-3 Shift Valve

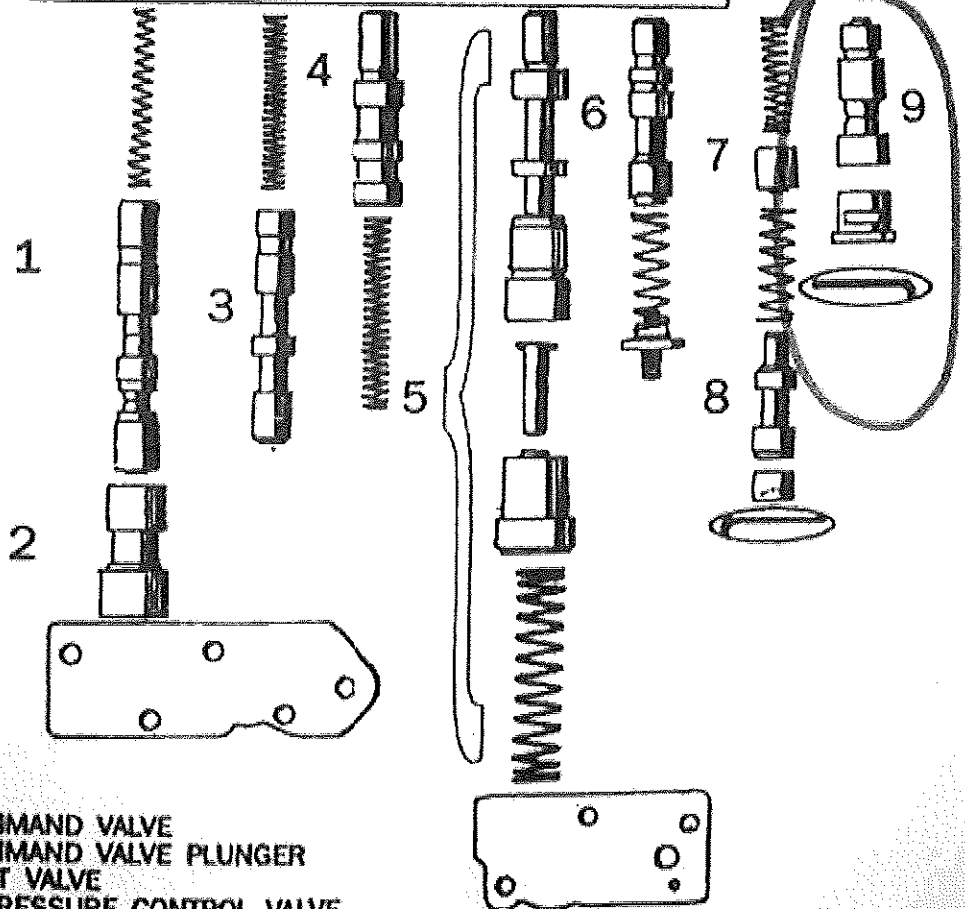
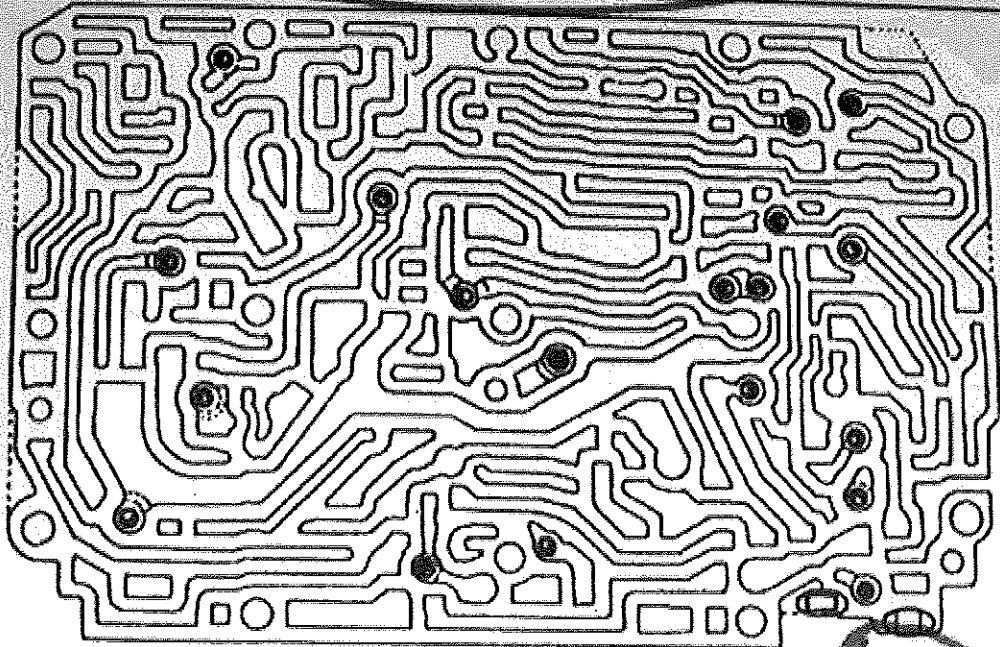
Main VB - Version 1 & 2

Note # 2
 If spring is located in BACK of gov. press. valve or there is NO Spring then the car will start off in 1st Gear!



Technical Service Information

UPPER VALVE BODY
(BOTTOM VIEW)



- 1. 2-3 COMMAND VALVE
- 2. 2-3 COMMAND VALVE PLUNGER
- 3. B1 SHIFT VALVE
- 4. BASIC PRESSURE CONTROL VALVE
- 5. WORKING PRESSURE CONTROL VALVE
- 6. FULL THROTTLE CONTROL VALVE
- 7. B1 PLUNGER CONTROL VALVE
- 8. B1 CONTROL VALVE
- 9. GOV. PRESSURE BOOST VALVE