

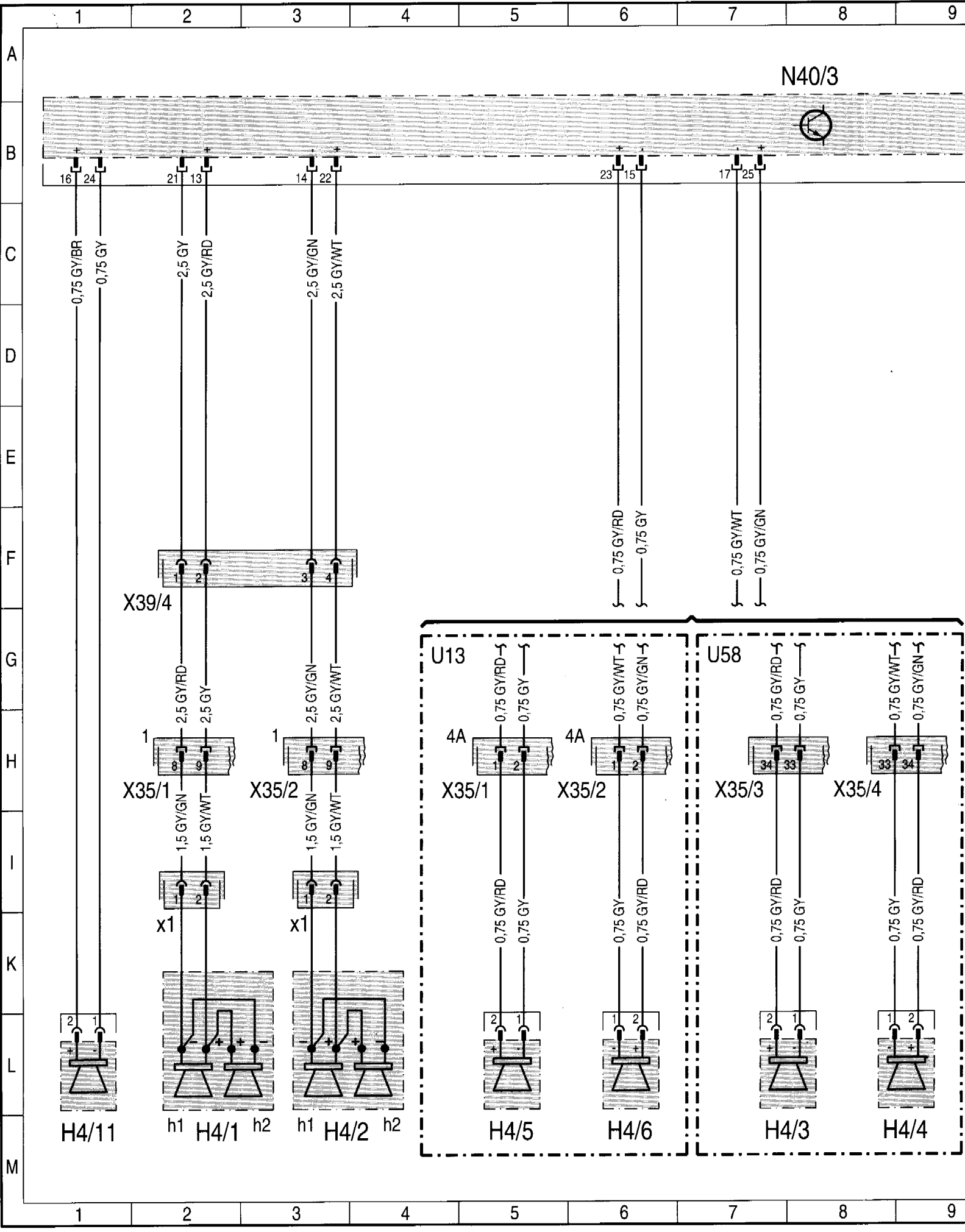
**Wiring Diagram, Radio with Sound System
As of MY 1994**

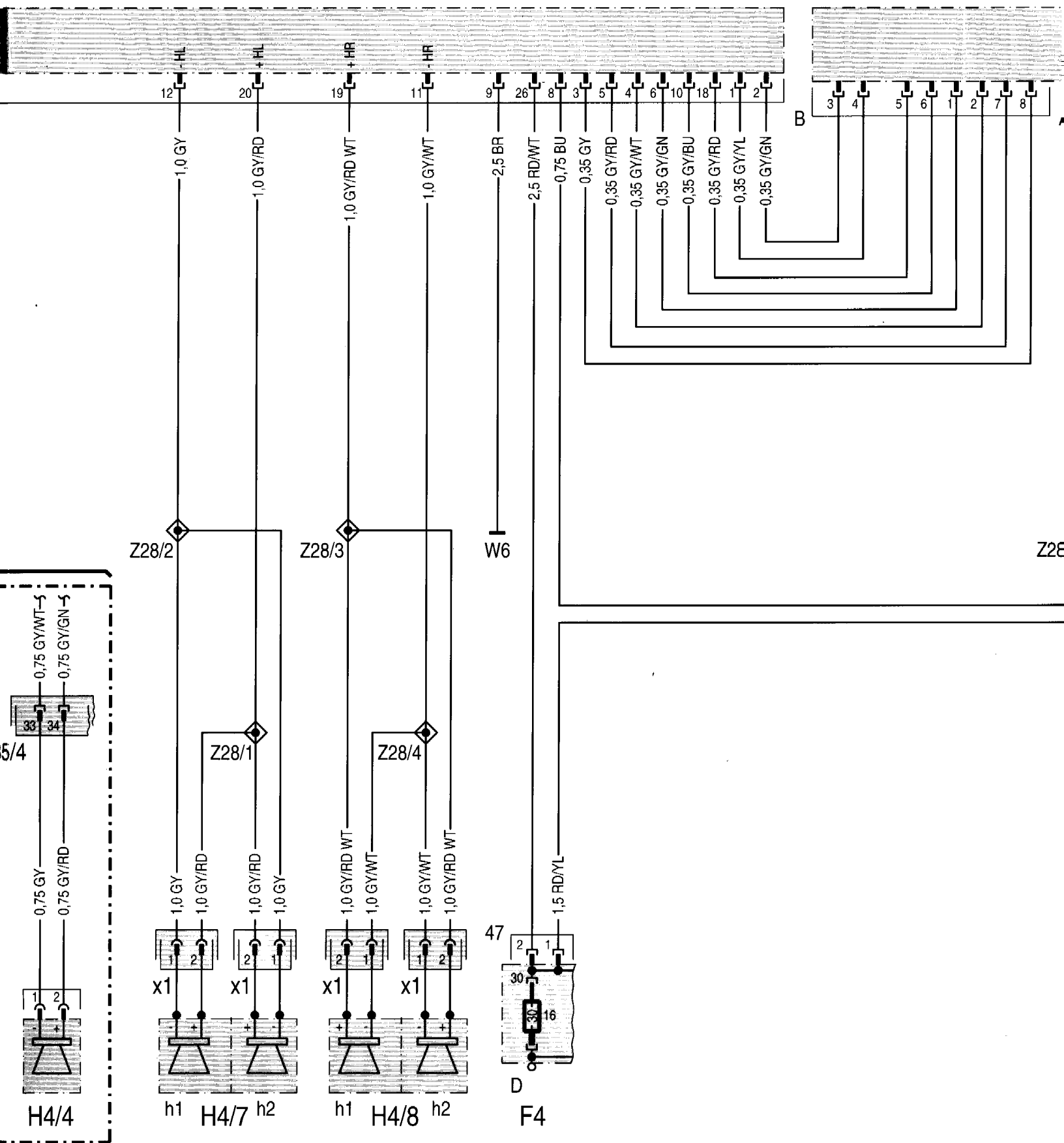
A2	Radio	22A	N10	Combination relay module (turn/hazard signal, heated rear window, wiper motor)	21M
A2/15	FM bumper antenna amplifier	26M			
A2/16	AM rear window antenna amplifier	28M			
A35	CTEL transmitter-receiver	20M	N40/3	Left/right audio power amplifier	8A
F3	Fuse box (35-fuse, in fuse and relay box F1)		U13	Valid for Coupé	
F3-22	Fuse 22, circuit 15C	23L	U58	Valid for all (except Coupé)	
F4	Rear fuse box (17-fuse, in trunk)		U86	Valid for replacement mast	
F4-16	Fuse 16, circuit 30	13L	U87	Valid for diversity antenna	
H4/1	Left front door speaker group	2M	W6	Ground (left wheelhousing in trunk)	
H4/1h1	Speaker 1	2M	W12	Ground (center console)	
H4/1h2	Speaker 2	3M	X69/16	<i>Radio ter. 15, VSS</i> Ground location without designation, component grounded directly on engine, chassis or body.	
H4/1x1	Left front door speaker connector	2K			
H4/2	Right front door speaker group	3M	X4/17	Terminal block (circuit 15C)	21H
H4/2h1	Speaker 1	3M	X6	Terminal block (circuit 58d) (3- or 4-pole)	19H
H4/2h2	Speaker 2	4M	X35/1	Left front door separation point	2H 5H
H4/2x1	Right front door speaker connector	3K	X35/2	Right front door separation point	3H 6H
H4/3	Left rear door speaker	7M	X35/3	Left rear door separation point	7H
H4/4	Right rear door speaker	9M	X35/4	Right rear door separation point	8H
H4/5	Left front door speaker	5M	X39/3	Left and right front speakers separation point (4-pole)	21F
H4/6	Right front door speaker	6M	X39/4	Left and right front speaker system intermediate connector (4-pole)	2F
H4/7	Left rear speaker group	10M	X39/12	Radio mute/transmitter-receiver connector (2-pole)	20F
H4/7h1	Speaker 1	10M	X46/5	Terminal block (right foot well)	23H
H4/7h2	Speaker 2	10M	Z7/28	Circuit 30 connector sleeve Radio/ sound system (from fuse F4-16)	18F 24H
H4/7h1x1	Left rear speaker group speaker 1 connector	10K	Z28/1	Left rear speaker group connector sleeve (+ signal)	10H
H4/7h2x1	Left rear speaker group speaker 2 connector	10K	Z28/2	Left rear speaker group connector sleeve (- signal)	9F
H4/8	Right rear speaker group	11M	Z28/3	Right rear speaker group connector sleeve (+ signal)	11F
H4/8h1	Speaker 1	11M			
H4/8h2	Speaker 2	12M			
H4/8h1x1	Right rear speaker group speaker 1 connector	11K			
H4/8h2x1	Right rear speaker group speaker 2 connector	12K			
H4/11	Center fill tweeter speaker (mirror base)	1M			
M11	Automatic antenna (radio/telephone) <u>USA</u>	25M			

Z28/4	Right rear speaker group connector sleeve (- signal)	12H
Z28/18	Sound system/antenna control connector sleeve	17F 25H 28H
Z81	Circuit 58d connector sleeve	13I

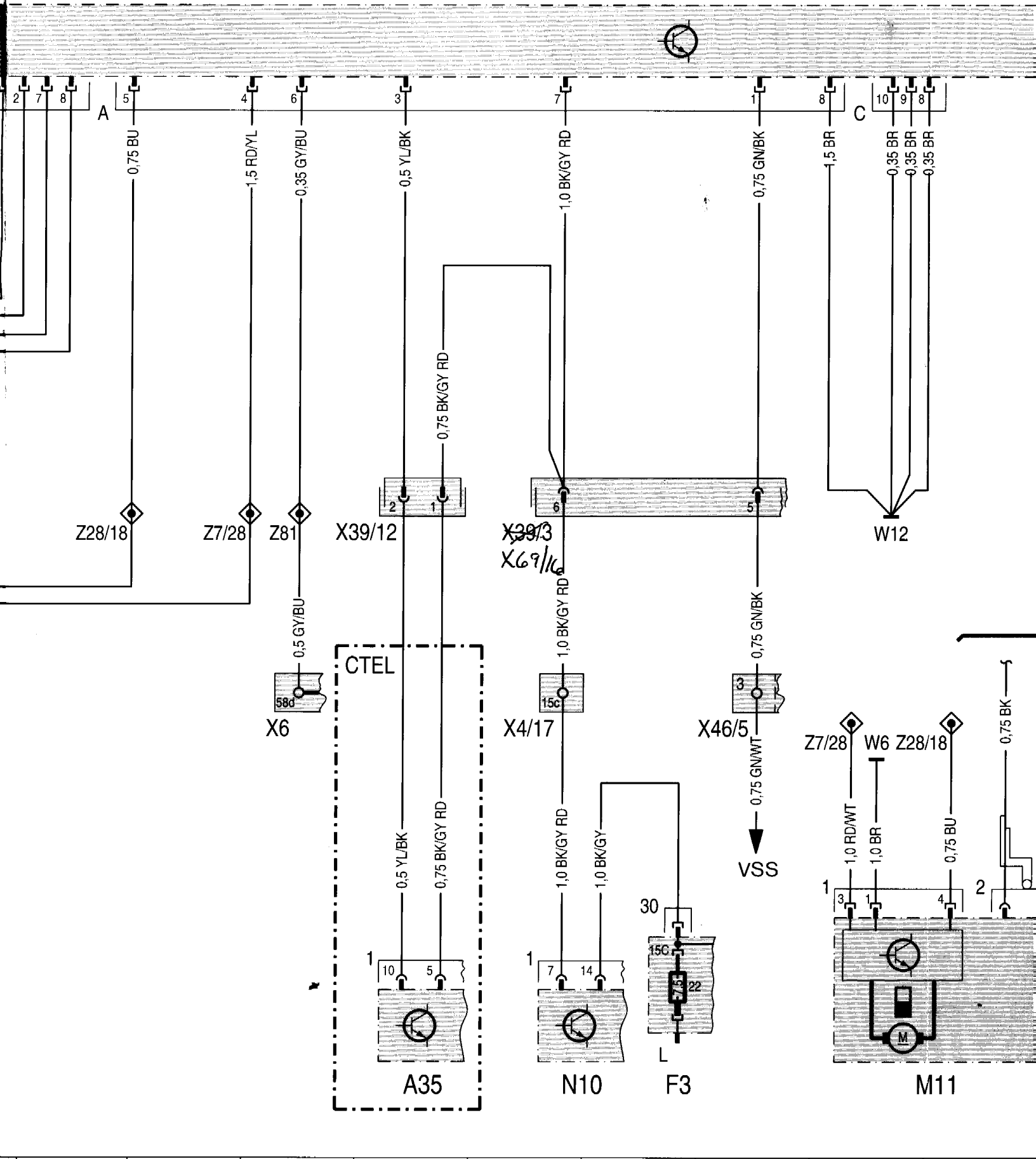
The wire cross section may deviate from the illustration. Wire change phase-ins are framed.

**Explanations and Notes of Wiring Diagram see Section 00-A
Locations/Connections/Overview see Section 00-B/00-C**

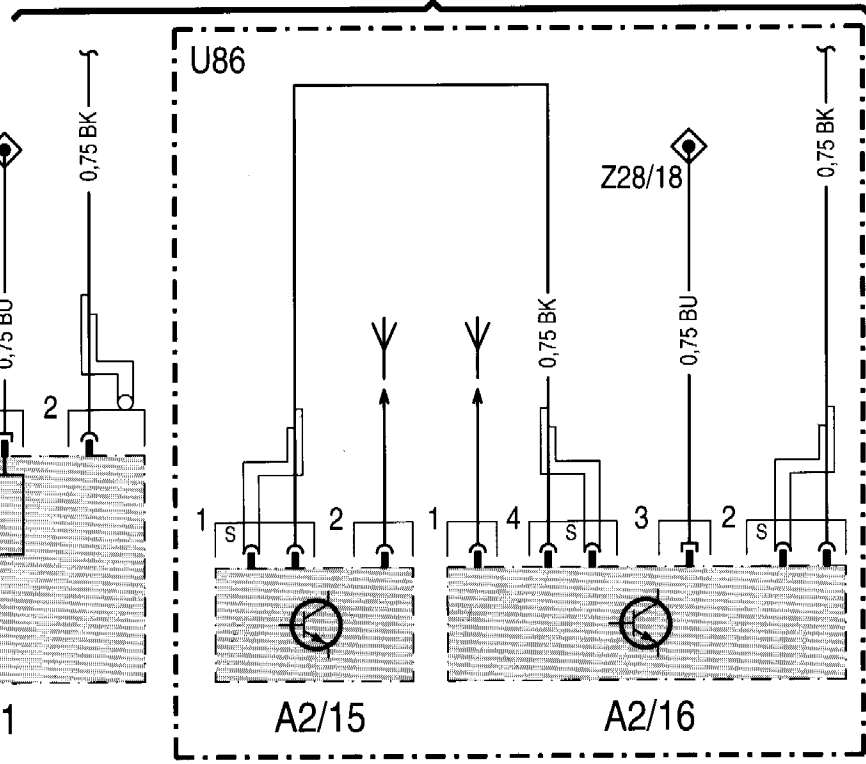




A2



A
B
C
D
E
F
G
H
I
K
L
M



(USA) P54-5885-97A
140.82-31.00