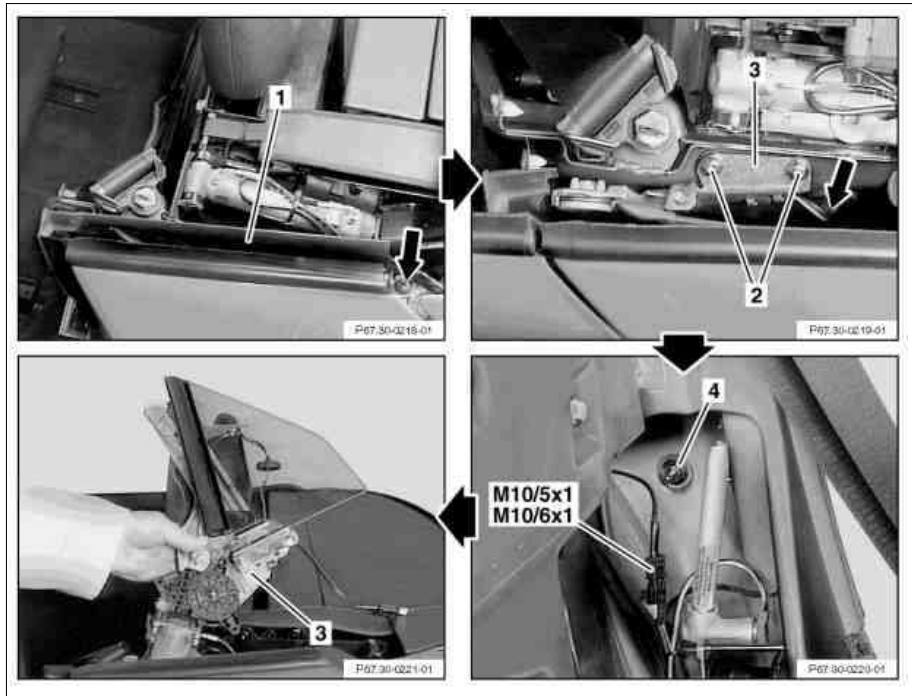


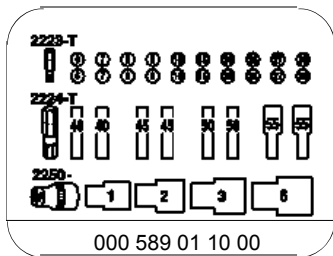
MODEL 170

- 1 Inner shaft seal
- 2 Bolt
- 3 Window lift mechanism
- 4 Counter nut
- M10/5x1 Connector
- M10/6x1 Connector



P67.30-0222-06

☒ ☒		Removal, installation	
1		Remove rear wall panel	AR68.30-P-4750G
2		Remove inner shaft seal (1) (1 screw, arrow)	
3		Unscrew bolts (2, 2 each)	ⓘ Use T30 torx socket bolt attachment ⓘ *000589011000
4		Unclip cable grommet (arrow) on B-pillar and separate connector (M10/5x1 or M10/6x1)	
5		Unscrew counter nut (4) (13 mm)	
6		Move threaded bolt out on B-pillar and remove window lift mechanism (3) upward out of window shaft	ⓘ Right side of vehicle: Due to lack of space resulting from tank fitting screw threaded bolt all the way in
7		Reinstall in opposite order, then check adjustment of rear side window and adjust, if necessary	AR67.30-P-4200G



Torx bit set